





**VIGOR** Technically functional and visually progressive apparel originally inspired by the lifestyle and performance needs of the street dancer. Available for all in the active and street wear markets, targeting men 25-55. It is for the man who values aesthetic evolution, yet one who puts comfort, longevity and performance first. It is for the man that wants to wear the same garment to relax as he wears to develop himself, to him it is one and the same. Vigor is for the man who seeks a greater quality for his life. Vigor is about enjoying oneself, living and shining.

**COLLAGE SOURCE MATERIAL**

Eng, Kilian. Monkey. 2009. Illustration. Stockholm.  
Loquarto, Luigi. Untitled. 2010. Acrylic on canvas.  
Sint Pieters Leeuw, Belgium.





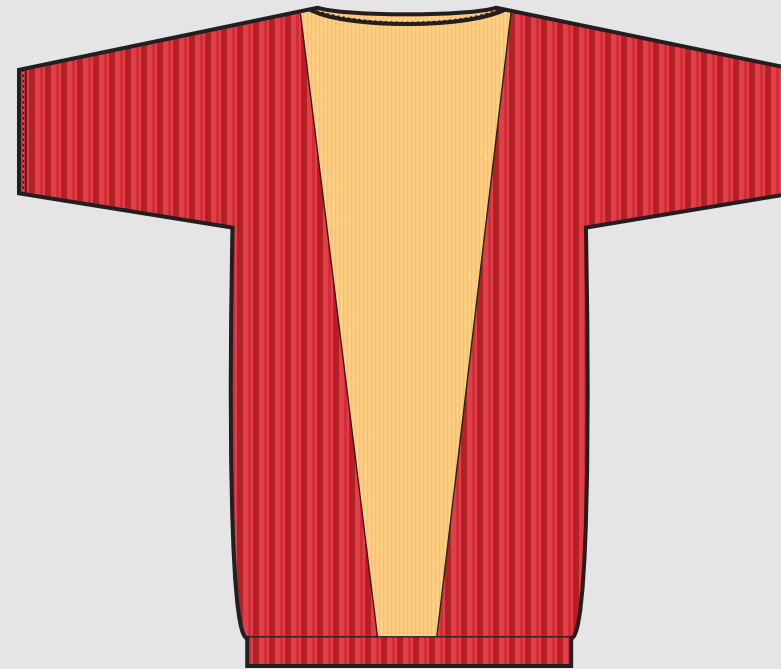
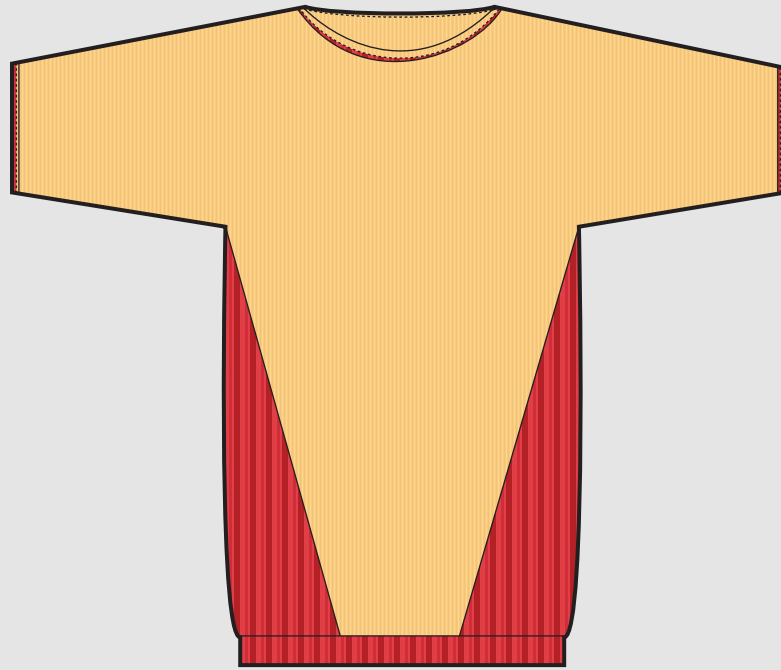


## MONDOTEK JACKET 1221

oilskin (Melbourne, Au), rib knit cotton w/ lycra liner

- oilskin is a durable basket weave cotton impregnated with oil and parrafin which makes it waterproof yet breathable
- unique single piece shoulder and sleeve is roomy and allows for movement while giving the jacket an interesting look
- layered skirt and paneled construction creates unique styling, edgestitching draws attention to details and flattens seams

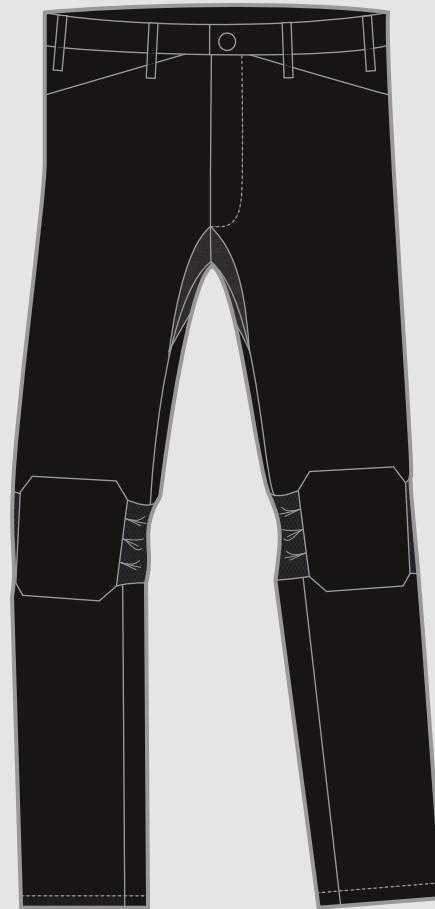




### KAMIKAZE SHIRT 1212

rib knit cotton w/ lycra, rib knit cotton

- diagonal off-side seams reduce chafing and create flattering fit
- tapered kimono sleeve, shoulder loose and allows for movement
- aesthetic interest in vertical and horizontal ribbing and boat-neck



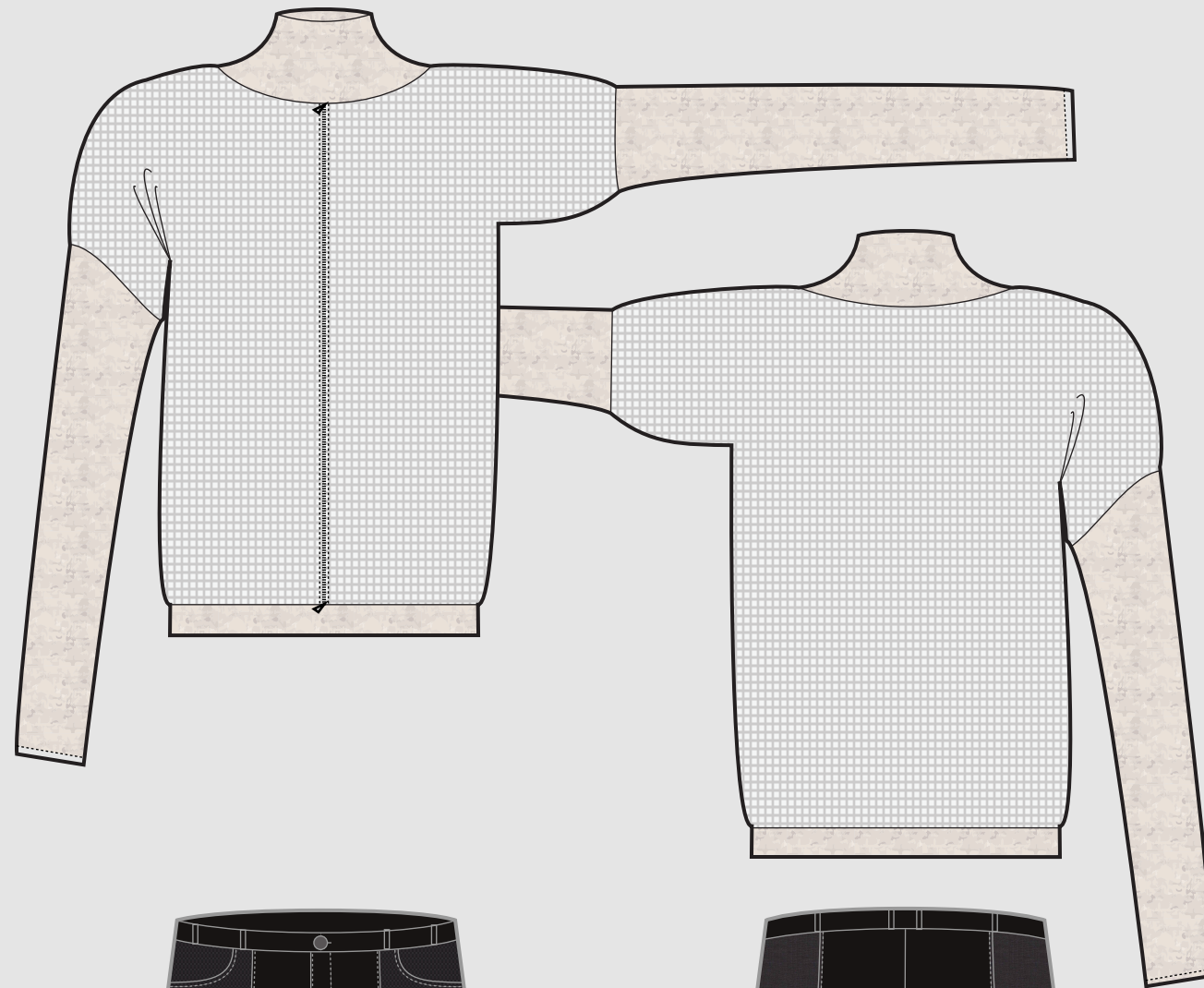
### GLIDE PANT 1231

cotton twill, stretch knit, reinforced neoprene rubber (Sydney, Au)

- flexible, light knit in crotch gusset and knee backs breathes easy
- reinforced neoprene plastic in knee pads maintains durability during high impact activity
- glossy rubber elements repeated in design create unique look







### 1990 JACKET/SHIRT 1223

heathered rib knit cotton w/ lycra, mesh cotton

- kimono shoulders attached to tight sleeves to allow freedom of movement
- zipper does not touch body allowing the look of a jacket, while also functioning as a shirt
- close fitting arms and neck combine with loose body and shoulders

### SWIPE CROP 1233

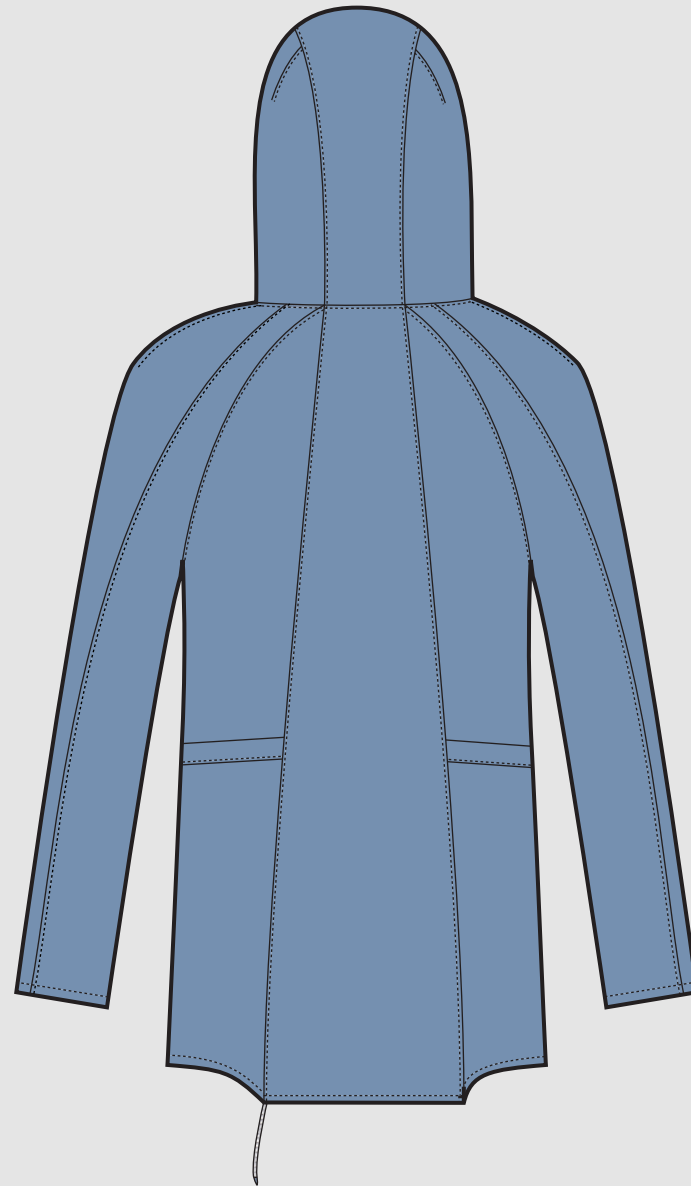
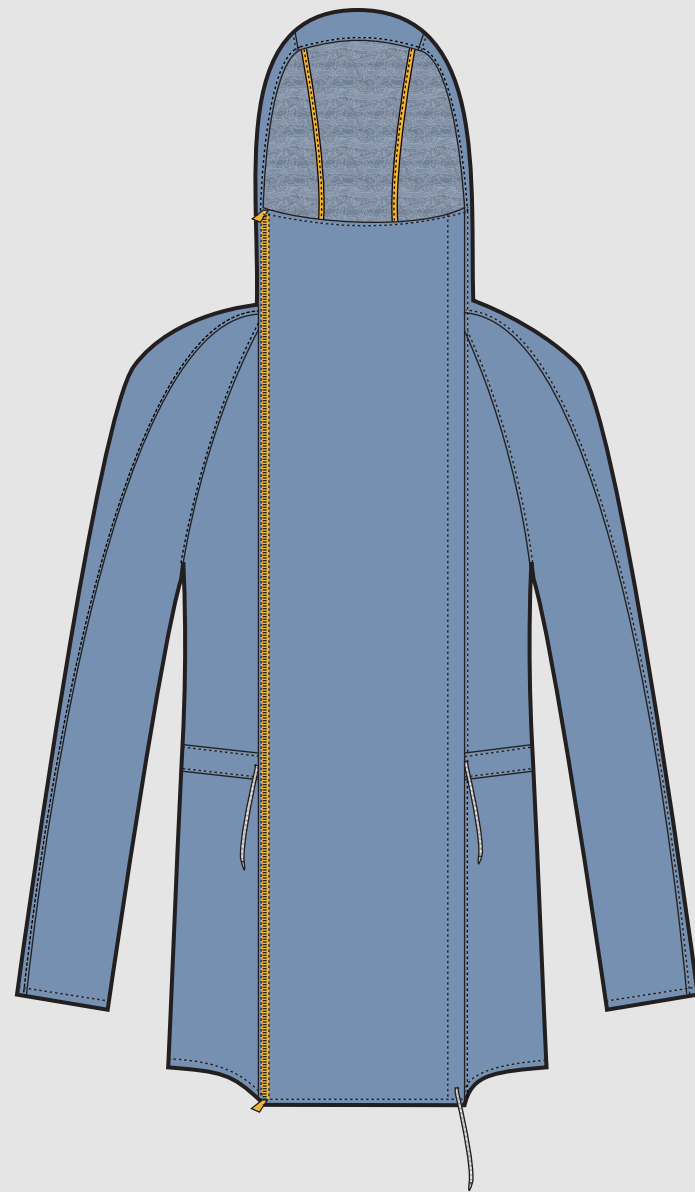
oilskin (Melbourne, Au), rib knit cotton w/ lycra

- oilskin panels reinforce key areas of wear & tear
- stretch knit panels ensure breatheability, good fit and increase mobility
- dropped crotch and paneling in different fabrics create aesthetic interest





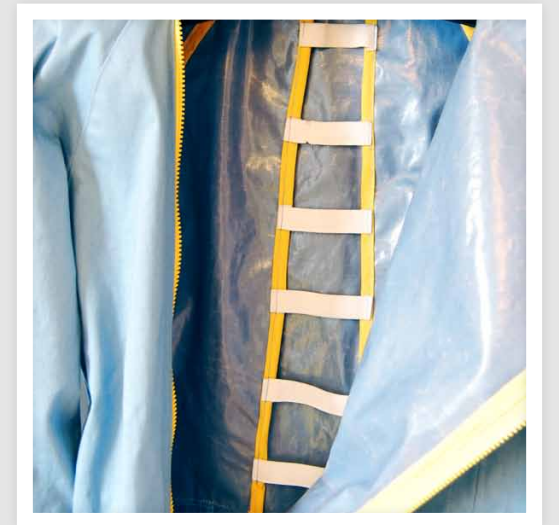




## AIRFLARE JACKET 1222

waterproof laminated cotton twill

- three-panel hood with darts fits close to head, covers mouth to protect from elements and allows greater peripheral visibility
- elastics combined with pleated back panel allow arm movement while maintaining stream-lined look, side vents allow full leg movement
- pull string down front and at waist sides allow fit adjustment as preferred
- topstitched, stream-lined panels and yellow bias binding and zipper create visual interest



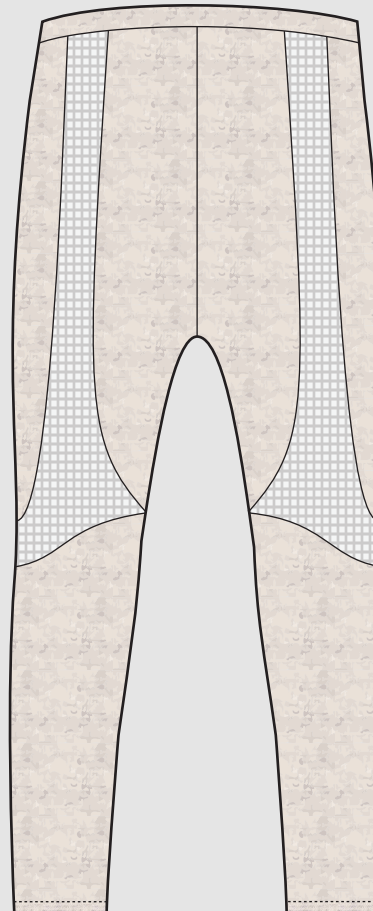
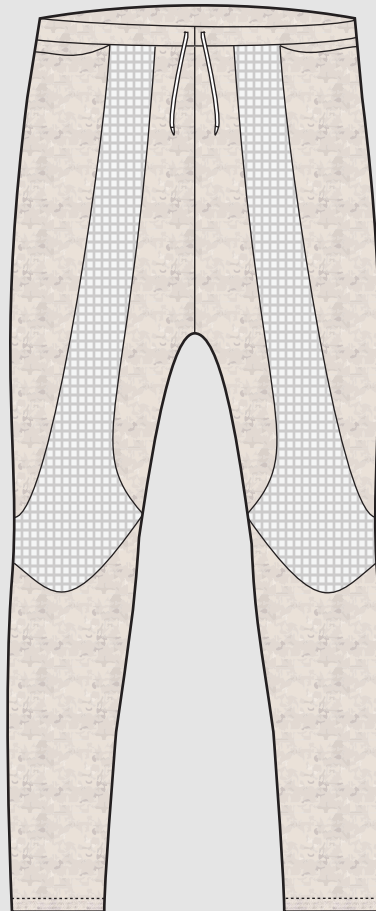




### HOLLOWBACK SHIRT 1211

rib cotton, rib knit cotton w/ lycra

- tubular shape with single back seam makes body loose and comfortable
- double zipper at back allows optional ventilation
- tight short sleeves maintain shirt position during exercise and flatter arms



### SHUFFLE SWEATPANT 1232

heathered rib knit w/ lycra, mesh cotton

- mesh panels allow sweatpant greater breatheability
- mesh reaches down to front and back of knee
- drop-crotch and paneled mesh with cotton create unique look

